



Saginaw County

2019 ANNUAL REPORT



\$35,047,588
economic impact



394
enrolled students at MSU



\$1,868,565
spending with local businesses



3,544
MSU alumni in Saginaw County



\$7,425,545
financial aid disbursed



2,229
youth in 4-H

Message from the District Director

Michigan State University (MSU) Extension helps people improve their lives by bringing the vast knowledge resources of MSU directly to individuals, communities and businesses. For more than 100 years, MSU Extension has helped grow Michigan's economy by equipping Michigan residents with the information they need to do their jobs better, raise healthy and safe families, build their communities and empower our children to dream of a successful future.



With a presence in every Michigan county, Extension faculty and staff members provide tools to live and work better. From a personal meeting to information online, MSU Extension educators work every day to provide the most current information when people need it to ensure success – in the workplace, at home and in the community.

Whether it's helping grow Michigan's agriculture economy, capturing opportunities that use our natural resources in a sustainable way, controlling health care costs by giving individuals the information they need to manage chronic illness or preparing tomorrow's leaders, MSU Extension is creating opportunities and building communities that make Michigan strong, prosperous and a great place to live.

On behalf of the MSU Extension team serving *your* County, thank you for your continued support. I would also like to thank all of our partners, businesses, families and youth that we serve. It is a pleasure and honor to work with you and meet your needs in our community.

Mark Rankin, District Director



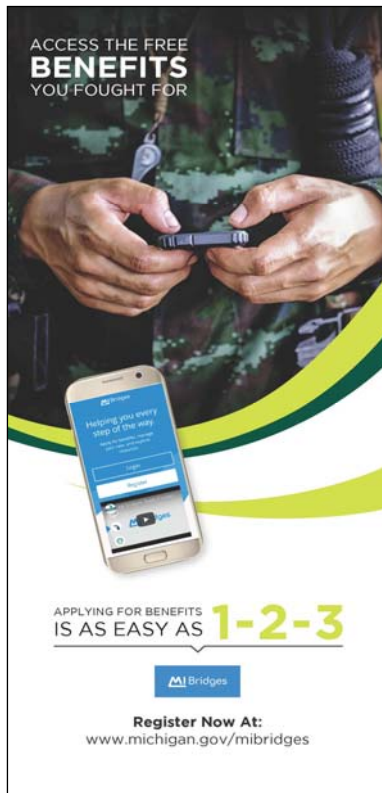
Farm Management

Farm Management Extension programs in Saginaw County provide educational resources to farmers in the areas of farm financial management and business planning. Critical topics in 2019 included extreme delays in spring crop planting and commodity program choices in the 2018 Farm Bill. Resources to address delayed planting concerns were provided statewide and accessed by Saginaw County farmers.

In collaboration with Farm Service Agency and MSU Extension Field Crops Educators, educational programming for the 2018 Farm Bill commodity programs included producer meetings, analysis tools, and individual consultations.

Meetings were held throughout the Saginaw Valley region, with approximately **17** farmers from Saginaw County attending along with an additional **12** consultations to provide individualized assistance with program decisions.

In addition, **13** farm families participated in the TelFarm financial analysis and benchmarking program and (or) received educational consultations for farm business planning.



ACCESS THE FREE
BENEFITS
YOU FOUGHT FOR

Helping you every step of the way

APPLYING FOR BENEFITS
IS AS EASY AS **1-2-3**

 Bridges

Register Now At:
www.michigan.gov/mibridges

Veteran SNAP Benefit Outreach

A key component of the SNAP for Vets program in Saginaw County is to distribute relevant and sensitive SNAP outreach materials to veterans and their families.

Four unique promotional materials targeting veterans were distributed to **1,151** veterans within Saginaw County in 2019. Direct promotion of SNAP benefits enabled us to engage with **77** veterans and **50** veteran service providers during the year.

In October, 2019, Kai Gritter, was hired and serves as the Coordinator of the statewide SNAP Outreach Program.

Food Access

Formed in 2018 with leadership from the Food Bank of Eastern Michigan, the Food Access Collaboration Team of Saginaw (FACTS) has begun to work to address food security and food access challenges in our community.

The group is formed as a food council for the whole county. Initially, the effort has created a shared calendar of food distributions, pantry open hours, soup kitchens, meals for youth and older adults, and other emergency food resources. This allows those poised to help to have access to information about hours and qualifications and the electronic resource is easily updated as things change.

Each quarter FACTS holds meetings with area agencies that are engaged in the work of meeting the need for food all over Saginaw County. In the late fall, the group discussed holiday focused feeding opportunities with a hope to eliminate duplication and encourage cooperation in the community. In the coming year, FACTS hopes to raise funds to tackle a food club or mobile market to serve a broader area in the community.

MSU Extension has contributed to the facilitation of meetings and the sharing of data among the group. Julia Darnton is a Community Food Systems Educator who is part of this effort. She has created shared maps to help the group see geographic gaps in service and data. She has also assisted with resources from MSU including those of the Center for Regional Food Systems.



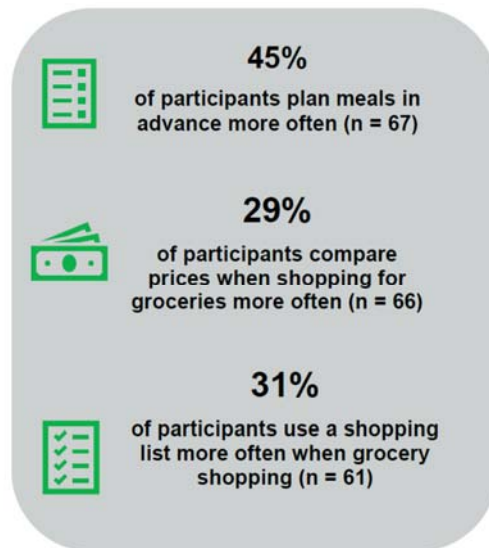
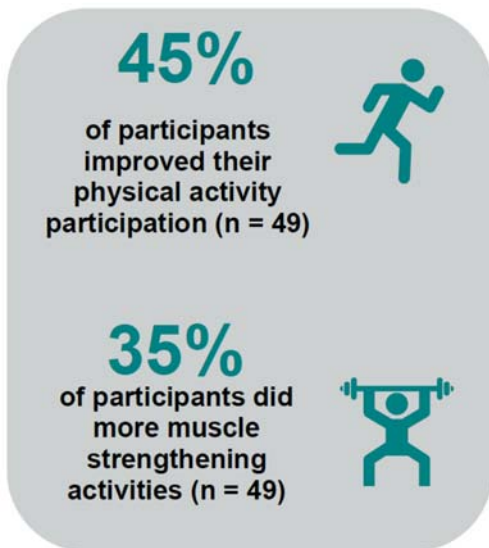
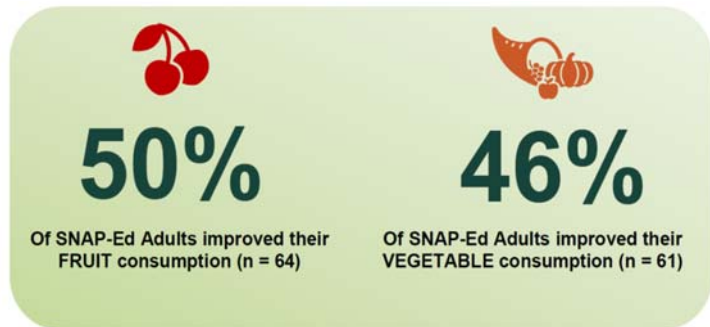
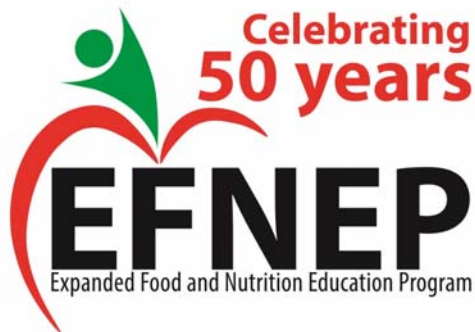
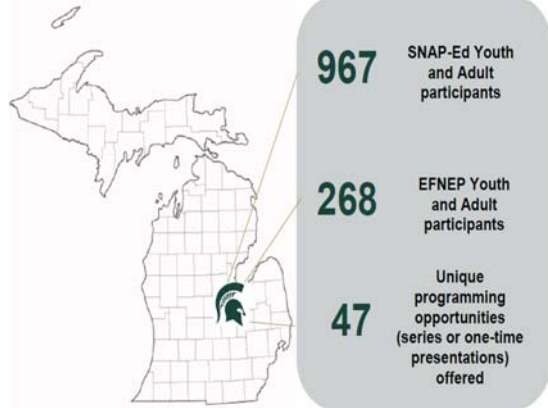
30 Vendors

selling locally grown fruit and vegetables, plants, ready-to-eat food, handmade goods, cut flowers and baked goods

MSU Extension Educator, Julia Darnton, continues to support the Downtown Saginaw Farmers' Market with technical assistance and serves as the chair of the Board of Directors for the organization. The market has continued to accept food assistance benefits at the market to make good food accessible to everyone while being a valued downtown gathering space.

Nutrition and Physical Activity

Collectively in 2019, community nutrition instructors (CNI's) reached a total of **1,235** youth and adults through federally funded nutrition education programming. Among youth, between **20-40%** increased fruit and vegetable consumption and **30-40%** increased physical activity participation. There were **429** adult participants who took part in specific program called WIC Project Fresh, a one-time nutrition education series to promote healthy nutrition behaviors and the use of farmer's markets. Results from these presentations show overwhelmingly that participants intend to consume more fruits and vegetables, purchase more fruits and vegetables from farmer's markets, and are more confident in using their WIC Project Fresh coupons at the farmer's markets.



Child and Family Development

Early experiences can have a direct and lasting impact on development throughout the lifespan. Child and Family Development programs assist parents and other caregivers as well as child care providers and early childhood professionals in order to ensure that children's early experiences are positive and that children and families are set up for success.

MSUE improves school readiness by teaching parents and caregiver's methods that increase early childhood science and reading literacy, and ways to prepare children socially and emotionally for school.

In 2019, seven one-time presentations, and four series presentations (a series is a class that meets a minimum of four times) were held in Saginaw County.

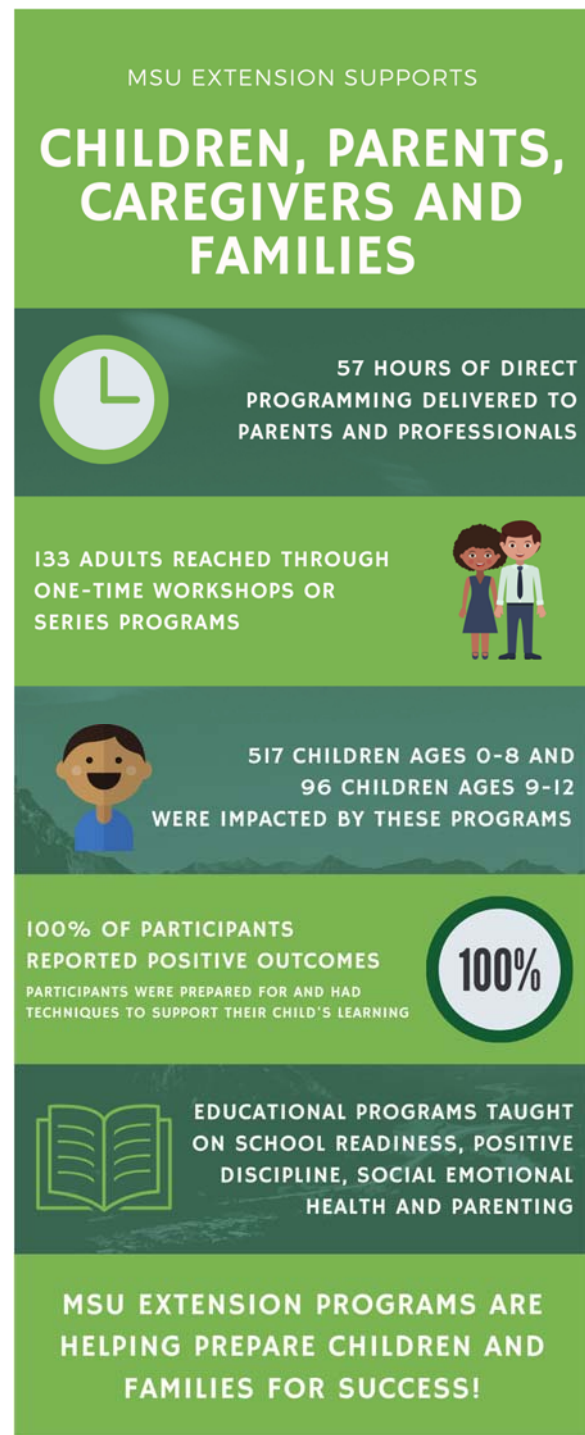
The educational workshops presented in 2019 represented a wide range of early childhood related topics including:

- Infant-toddler development
- Math
- Literacy
- Parenting

These programs were supported by collaborators such as the Great Start to Quality Eastern Resource Center and Saginaw Head Start.

After participating in early childhood one time workshops, 100% of participants indicated that they understood the importance of actively supporting their child's learning, 100% were prepared to support their child's learning and growth and 100% had techniques to help children learn.

Impact Statement from a foster parent attending a parenting series: *A participant was fostering her nephews to adoption and was struggling with her 7-year-old with attachment issues, which result in extreme behaviors. She came back each week sharing a new technique or strategy that she tried and excitedly talked about small improvements. One week her nephew said to her, "You're nicer since you started taking that parenting class."*





At the age of 17 Robert joined the Frankenmuth Pacesetters 4-H Club in 2016. It was a good choice. He has always had a hard time making friends and interacting with kids his own age. In 2017 Robert was diagnosed with Autism, ADHD, difficulties with his working memory, and his doctors have expressed a concern that the Flint water that Robert consumed while in school might have had a negative impact on his learning. 4-H has helped him make friends and learn life skills. Robert attended a class through 4-H that taught the kids how to upcycle pop cans. Robert enjoyed making them so much that when he received an assignment for one of his school classes to come up with a “fake” business. He knew exactly what that business should be. He chose to make ornaments for a few friends and family members. Robert started this business making pop can snowflake ornaments and has just recently branched into pop can butterfly ornaments. He does most of his business through craft and vendor show. Robert hopes to set up an Etsy online shop soon.

4-H

There are **359** youth in organized 4-H Clubs that meet yearlong either weekly or monthly, and **1870** youth participating in short term, afterschool and spin clubs' 4-6 week series at a time. 4-H leaders encourage youth to continue to grow learning life skills and become tomorrow's decision makers of Saginaw County.

80 4-H volunteer leaders
donate **20,000** hours
annually which equates to a
\$400,000 investment in
Saginaw County

Local highlights include:

- 150 youth from Handley Elementary School participated in an educational horse exhibit session
- 28 youth from Zilwaukee Elementary School participated in an embryology project
- Growing for Tomorrow, a 4-H special interest club formed a partnership with the H.M. Boyd Community Garden. A total of 5 youth received farm scholarship for gardening.
- 23 Saginaw County youth participated in 4-H Exploration Days (a three-day event) held on the MSU campus. Youth were given the opportunity to expand their knowledge and try something new by choosing from 200 action-packed learning sessions in their favorite interest areas.
- 55 youth and adults attended the Saginaw County recognition banquet. A total of 11 youth which included 20 different 4-H project areas.
- A total of 22 volunteers were honored for 450 years of service at the annual banquet. Also an outstanding teen, Isabella Kettler was honored.

Sugarbeet Advancement

On May 15th, Daniel Bublitz joined the team as the new director of the program. The team work can be divided into two broad categories, including research and farmer education. Sugarbeet Advancement's research this year consisted of **24** field trials, which includes **7 variety trials, 3 planting rate trials, a seed treatment trial, 6 plant nutrition studies, and 7 plant disease trials**. Each of these trials were done in collaboration with a sugarbeet farmer, with 3 of the trials being located in Saginaw County. Even the trials that were not conducted in Saginaw County have a major impact on the approximately **110** sugarbeet farmers within the county by providing them with useful information and recommendations which can be implemented on their farms.

The second component of Sugarbeet Advancement's mission is to use the information gained through its research, and the research of others, to educate sugarbeet farmers. A major aspect of this is the organization of meetings where such information is shared. This year, Sugarbeet Advancement helped to organize and/or participated in several such events. The first of these was the Bean and Beet Symposium, which was held at the Horizon's Conference Center in Saginaw. This event included a trade show, as well as three hours of presentations by sugarbeet researchers.



The next event was Michigan Sugar's winter agronomy meeting series. This event included meetings at six different locations throughout the sugarbeet growing area.

During the first week of December, Sugarbeet Advancement hosted an event referred to as Seed Week. This is a series of meetings intended to help sugarbeet farmers make an informed decision when selecting which varieties of sugarbeets to plant. This was a five-day series of meetings.



Sponsored Outreach Events

- **Bean and Beet Symposium reaching 450 people**
- **Sugarbeet field day reaching 75 growers**
- **Michigan Sugar's winter agronomy meeting series reaching 480 growers**
- **Virtual Breakfast Seminar reaching 241 participants**
- **Seed Week reaching 450 participants**

MICHIGAN STATE UNIVERSITY | Extension

Mark Rankin, District Director

rankm1@msu.edu (989) 743-2251 (877) 643-9885

Saginaw

723 Emerson St
Saginaw, MI 48607

Email: msue.saginaw@county.msu.edu

Phone: 989-907-6500

Fax:

First Name	Last Name	Title	Program Area	Email
Daniel	Bublitz	Senior Extension Educator	Sugarbeet Advancement	bublitzd@msu.edu
Julia	Darnton	Extension Educator	Community & Economic Development	darntoni@msu.edu
Maggie	Dougherty	CNI	Health and Nutrition	dough109@msu.edu
Dawn	Earnesty	Evaluation Specialist	Health and Nutrition	wilcoxd4@msu.edu
Kia	Gritter	Supervising Educator	Health and Nutrition	grittern@msu.edu
Ben	Phillips	Extension Educator	Vegetable Crops	phill406@msu.edu
Kylie	Rymanowicz	Extension Educator	Early Childhood Education	rymaow1@msu.edu
Sheila	Salo	CNI	Health and Nutrition	salo@msu.edu
Joanne	Silvia	Office Manager		silviaj@msu.edu
Jan	Wendland	Program Coordinator	4-H	wendlan2@msu.edu
Thomas	Wenzel	Research Assistant I	Sugarbeet Advancement	wenzelth@msu.edu



MSU is an affirmative-action, equal-opportunity employer, committed to achieving excellence through a diverse workforce and inclusive culture that encourages all people to reach their full potential. Michigan State University Extension programs and materials are open to all without regard to race, color, national origin, gender, gender identity, religion, age, height, weight, disability, political beliefs, sexual orientation, marital status, family status or veteran status. Issued in furtherance of MSU Extension work, acts of May 8 and June 30, 1914, in cooperation with the U.S. Department of Agriculture. Jeffrey W. Dwyer, Director, MSU Extension, East Lansing, MI 48824. This information is for educational purposes only. Reference to commercial products or trade names does not imply endorsement by MSU Extension or bias against those not mentioned. The 4-H Name and Emblem have special protections from Congress, protected by code 18 USC 707.